



Horizontal Flat Bottom Drag Conveyors 12 Series

DESIGNED FOR CAPACITIES UP TO 4,000 BPH

- * Superior craftsmanship
- * Easy to install & maintain
- * Built to last
- * Heavy duty galvanized construction and components

TAIL

- 10 ga. galvanized steel
- Heavy duty 1/4" take-up plate weldments
- Heavy duty screw take-ups

HEAD

- 10 ga. galvanized steel to protect against corrosion
- Removable head shell for ease of access to sprocket, bearings and shaft

TROUGH

- Preassembled trough sections to reduce installation time
- No metal-to-metal contact of chain to trough
- Roller returns
- Removable bottom for easy replacement of liners and servicing
- Many cover types available (hip roof or flat)
- 10 ga. galvanized sides and bottom standard

DRIVES

- Gear motor drive
- V belt drive

CHAIN

- 1/2" thick UHMW replaceable flights with steel reinforcing chain attachments
- Up to 6,000 lbs. working in load (38,000 lbs. ultimate strength)
- Steel pintle chain

OPTIONS

- Extra standard inlets • Bypass inlets • Dump hoppers • Intermediate discharge gates • Chain slack switch
- Hinged pressure relief door • 10 ga., 3/16" and 1/4" AR 200 liner • 3/16" and 1/4" AR 400 liner
- Split sprocket and hardened teeth • Angle rail returns



Website: www.sweetmfg.com



Email: sales@sweetmfg.com

Phone: 937-325-1511





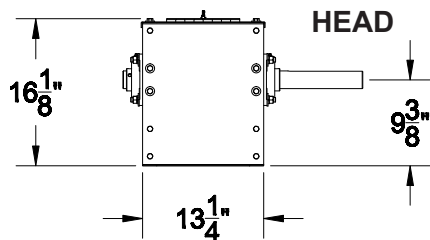
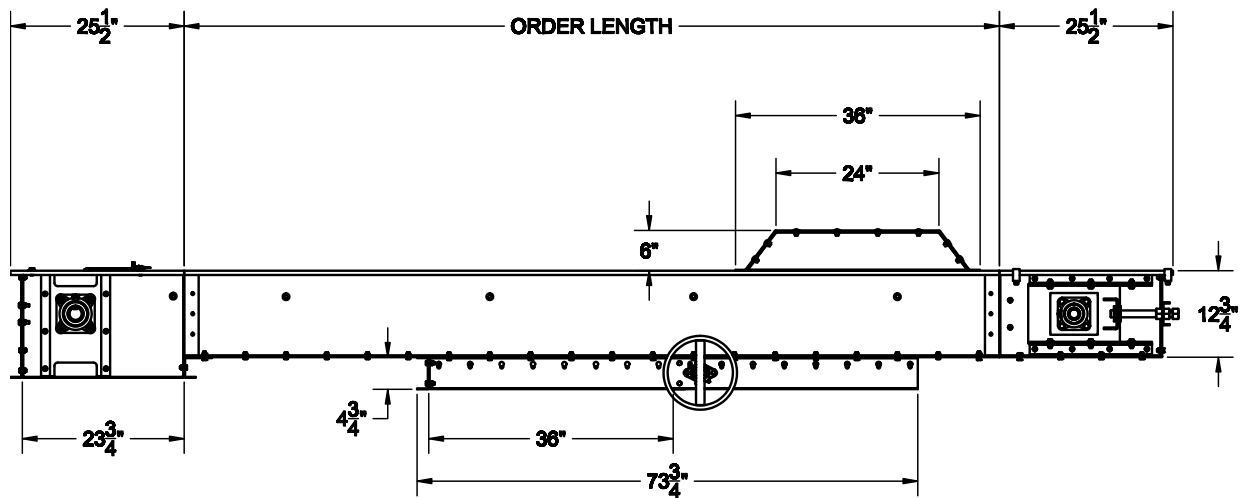
Horizontal Flat Bottom Drag Conveyors - 12 Series

CAPACITY/LENGTH/HORSEPOWER

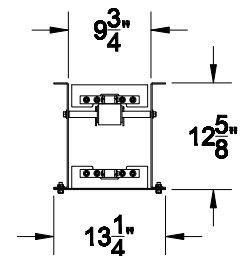
		BUSHELS PER HOUR CAPACITY AND CORRESPONDING HORSEPOWER												
		1000 (44 FPM)	1250 (55 FPM)	1500 (66 FPM)	1750 (77 FPM)	2000 (87 FPM)	2250 (98 FPM)	2500 (109 FPM)	2750 (120 FPM)	3000 (131 FPM)	3250 (142 FPM)	3500 (153 FPM)	3750 (164 FPM)	4000 (175 FPM)
LENGTH IN FEET	10	1.0	1.0	1.0	1.0	1.0	1.0	1.5	1.5	1.5	1.5	1.5	2.0	2.0
	20	1.0	1.0	1.0	1.5	1.5	1.5	2.0	2.0	2.0	2.0	3.0	3.0	3.0
	30	1.0	1.5	1.5	1.5	2.0	2.0	3.0	3.0	3.0	3.0	3.0	5.0	5.0
	40	1.5	1.5	2.0	2.0	3.0	3.0	3.0	3.0	5.0	5.0	5.0	5.0	5.0
	50	1.5	2.0	2.0	3.0	3.0	3.0	5.0	5.0	5.0	5.0	5.0	5.0	5.0
	60	1.5	2.0	3.0	3.0	3.0	5.0	5.0	5.0	5.0	5.0	5.0	7.5	7.5
	70	2.0	3.0	3.0	3.0	5.0	5.0	5.0	5.0	5.0	7.5	7.5	7.5	7.5
	80	2.0	3.0	3.0	5.0	5.0	5.0	5.0	7.5	7.5	7.5	7.5	7.5	7.5
	90	3.0	3.0	5.0	5.0	5.0	5.0	7.5	7.5	7.5	7.5	7.5	10.0	10.0
	100	3.0	3.0	5.0	5.0	5.0	7.5	7.5	7.5	7.5	7.5	10.0	10.0	10.0
	110	3.0	5.0	5.0	5.0	5.0	7.5	7.5	7.5	7.5	10.0	10.0	10.0	10.0
	120	3.0	5.0	5.0	5.0	7.5	7.5	7.5	7.5	10.0	10.0	10.0	10.0	15.0
	130	3.0	5.0	5.0	5.0	7.5	7.5	7.5	10.0	10.0	10.0	10.0	15.0	15.0
	140	5.0	5.0	5.0	7.5	7.5	7.5	10.0	10.0	10.0	10.0	15.0	15.0	15.0
	150	5.0	5.0	5.0	7.5	7.5	7.5	10.0	10.0	10.0	15.0	15.0	15.0	15.0

*NOTE: FPM = FEET PER MINUTE. CHART IS BASED ON 45 POUNDS PER CUBIC FOOT.

DIMENSIONS IN INCHES



TROUGH SECTION



Note: Dimensions (to the nearest 1/8 inch) are for reference only and may be subject to change.



Phone: 937-325-1511
Fax: 937-322-1963

Website: www.sweetmfg.com
E-mail: sales@sweetmfg.com

P.O. Box 1086
Springfield, OH 45501

